

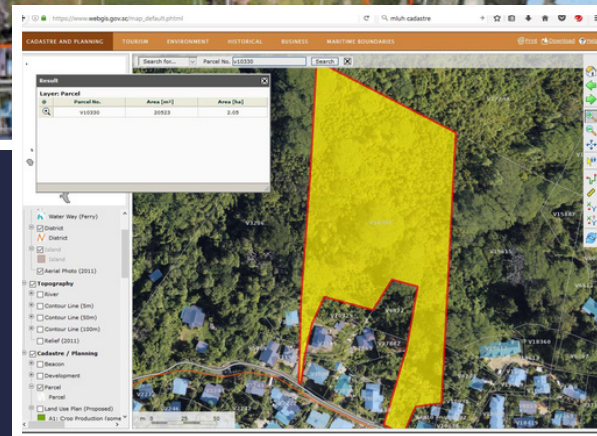


FOR SALE

Prime Development Opportunity Minutes from Central Victoria

An exceptional 20,000 sqm parcel awaits, offering breathtaking views over Victoria and beyond. This versatile property is ideal for developing stylish residences or apartments, or for investors looking to subdivide and sell individual plots.

With a below-market asking price, this opportunity promises substantial returns on investment, making it an unparalleled prospect for savvy developers and investors.



PARCEL V10330

20523 SQM

LESS THAN 500M TO CBD

EXCEPTIONAL VIEWS

TOURISM POTENTIAL

USD \$750,000



+248 2523882

nsaintange@yahoo.com.au